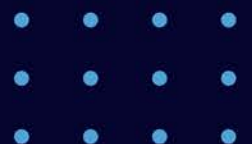


THE NTDC TECHNICIAN SURVEY



The NTDC Technician Survey captures information on every aspect of a technical workforce, from specialist technical skills, to future career plans and development needs.



The Survey

Each institution receives a bespoke version of the survey, specifically tailored to support and enable your strategic workforce planning, and help you utilise the skills of your technical workforce.

What does the survey capture?

At the core of the survey is a Technical Skills Database, containing over 3,000 unique technical characteristics. This, along with the NTDC Survey Team's specialist experience, allows us to guide each institution through the whole process, which includes:

- Tailoring the survey to your institution
- Assisting with your communication and engagement strategy
- Running the survey on your behalf
- Providing access to the data and follow-up actions

“

The data collected by the NTDC Technician Survey at individual institutions is an example of how powerful collective information can be, and has already been a huge help in helping these institutions to identify the training and development needs spread throughout their technical workforce

”

Mel Leitch, NTDC Director



“ We hadn't anticipated the level of untapped skills that we hold ”

University of Reading

Why run the survey?

Institutional and individual engagement with the survey raises the visibility and recognition of technicians by supporting career development, enabling the strategic and operational planning for a sustainable technical workforce.

For institutions:

The survey allows institutions to identify upcoming technical skills gaps, unused technical expertise and areas of support and development that their technical workforce may benefit from.

For individual technicians:

The survey is a chance to carry out reflective CPD and make their institution aware of their skills and development needs.

Contact Us



enquiries@ntdc.ac.uk



www.ntdc.ac.uk/tech-survey



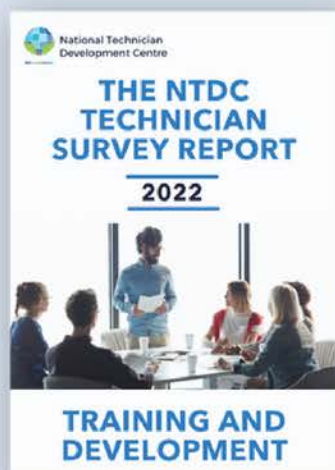
[@NTDCtweets](https://twitter.com/NTDCtweets)

NTDC Survey Report

The NTDC Technician Survey Report 2022: Training and Development is the second in a series of reports on the findings collected from previous survey data.

The 2022 report shows findings from data collected from the first eleven universities to run The NTDC Technician Survey.

The areas of focus are Management Skills, Interpersonal Skills and Health and Safety Skills.



Read and
download the
report here

